

For Lease
1,000 sf - 1,100 sf Units
Available



3180 Isleville Street, Halifax, NS
PID#s 00131409 & 40358012

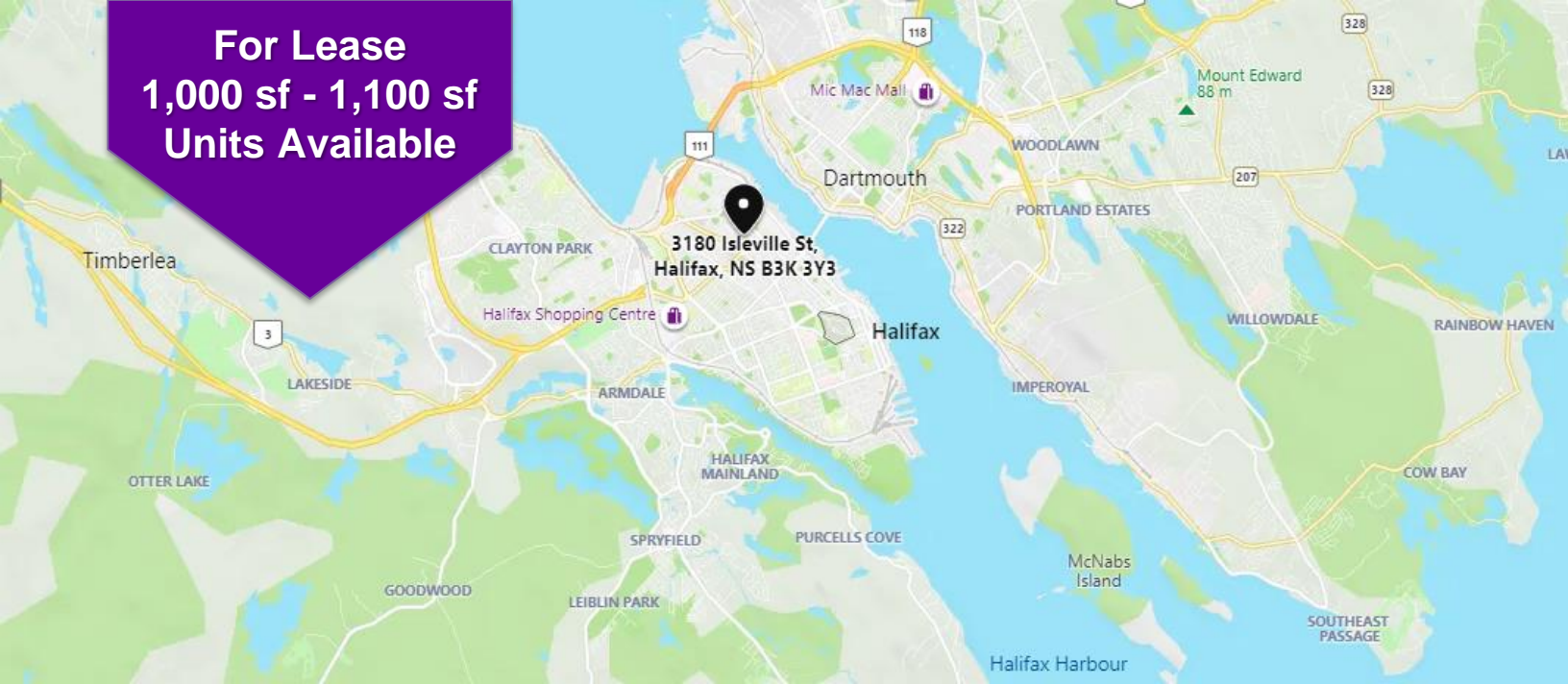
For Lease:

Located in Halifax's trendy North End, this five unit commercial property is just steps away from the Central Business District. Property comprises of five units between 1,000 sf and 1,600 sf. This property was reconstructed in 2021 and is ready for your improvements.

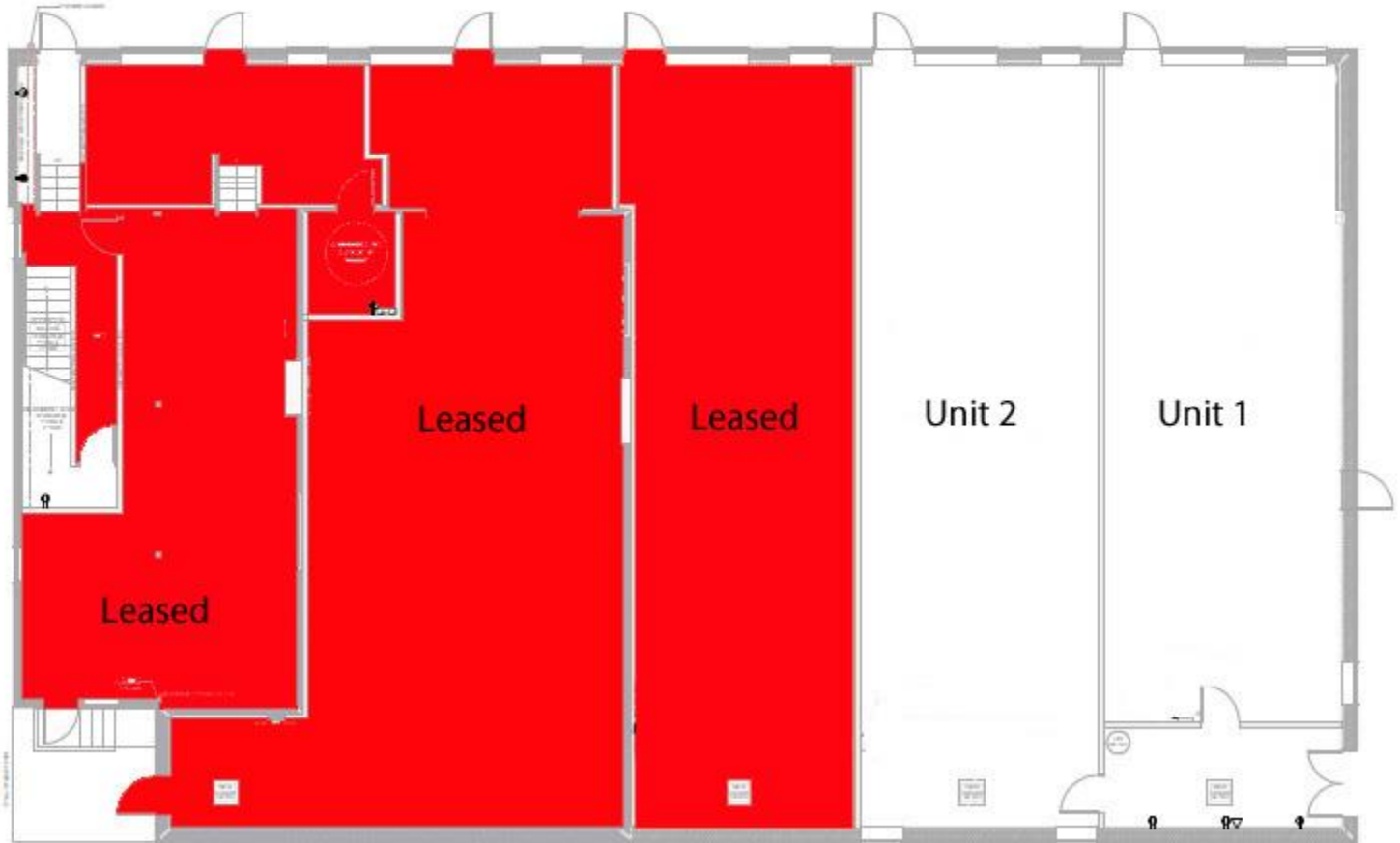
Asking Rent: \$27 psf net plus operating & utilities



**For Lease
1,000 sf - 1,100 sf
Units Available**



Floor Plan:



For more information:



Ashley Urquhart
+1 902 429 1811 ext. 340
ashley@turnerdrake.com



Emily McClelland
+1 902 429 1811 ext. 345
emcclelland@turnerdrake.com